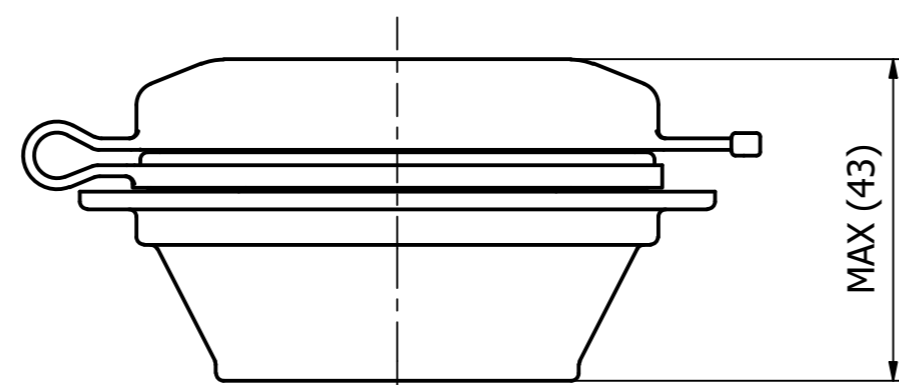
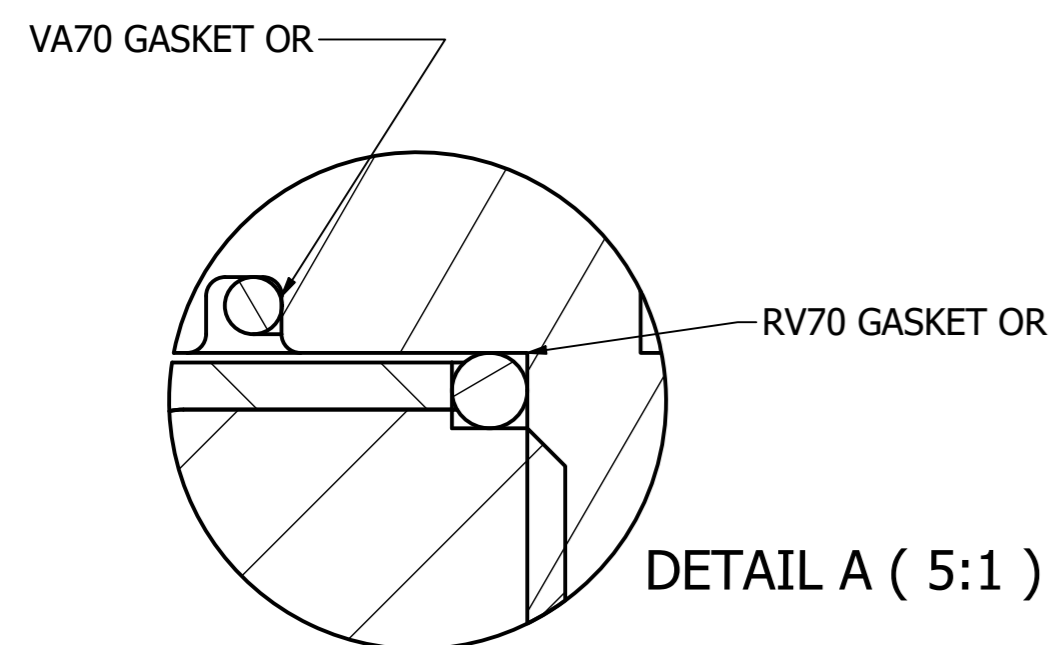


INSTALLATION

1. HOLE REQUIRED FOR VALVE INSTALLATION = $\varnothing 70 \pm 0,5$ mm
2. TIGHTENING TORQUE = 30 Nm
THE VALVE ASSEMBLY SHOULD BE RE-TORQUED AFTER AT LEAST 12 HOURS
3. THE USERS RESPONSIBILITY TO ENSURE THAT ANY FLUIDS USED DURING THE INSTALLATION OR OPERATION ARE COMPATIBLE WITH THIS VALVE
4. PRESSURES SETTING AVAILABLE IN THE TABLE ATTACHED

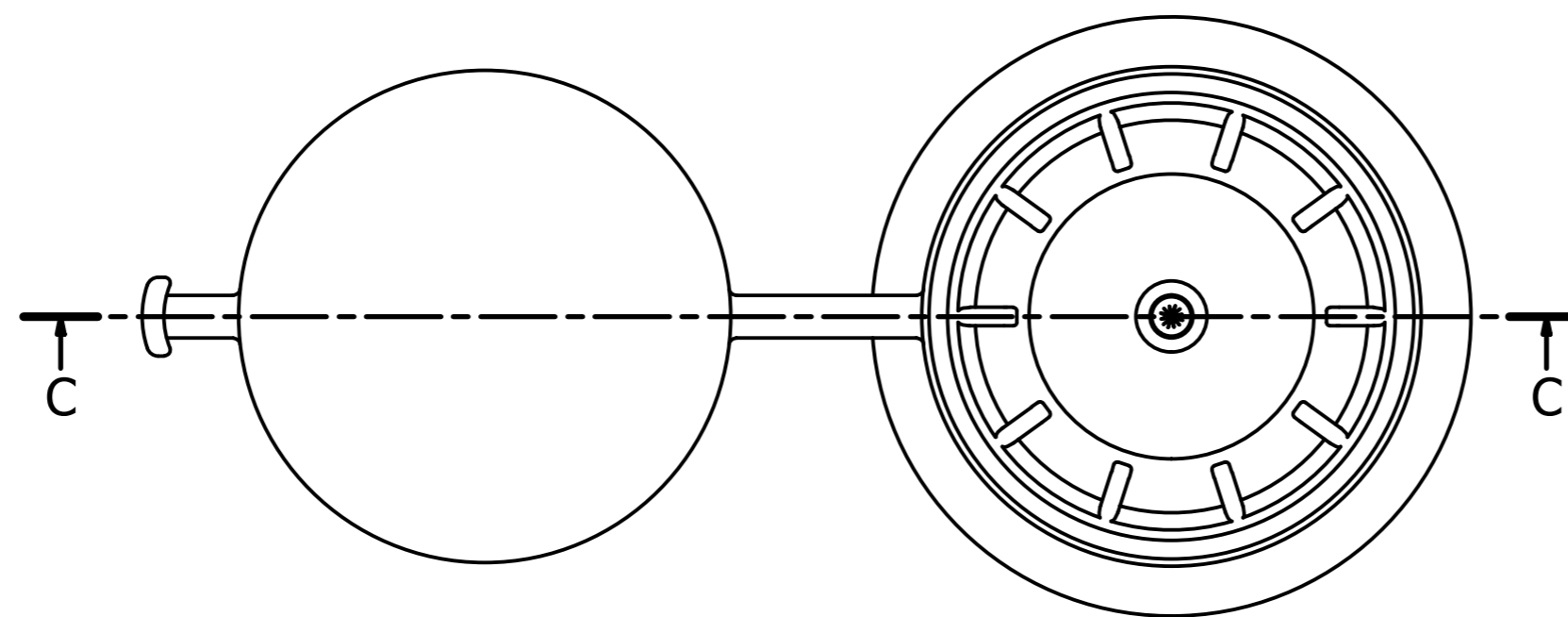
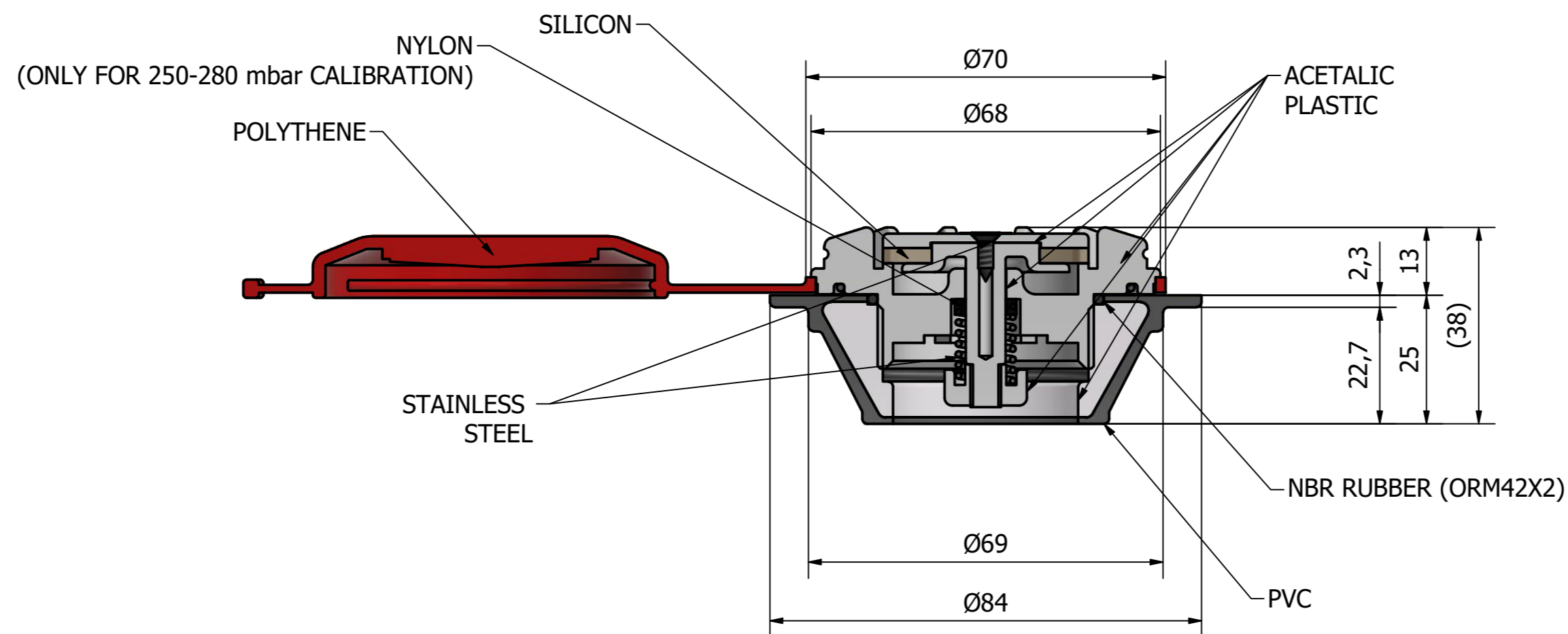
APPLICABLE STANDARD

ISO 15738:2002(E)



CODES AND SETTING OF RELIEF VALVES										
Part Number RV70	Part Number RVG70	Part Number VA70	Nominal Opening	Nominal Closing	Color	kPa	mbar	mmHg	Part number spring	Additional PRT
KA080300		A080350	150	120	giallo/yellow	12	120	90	3865078	
KA080301	KA080173	A080351	180	150	rosso/red	15	150	113	3865078	
KA080302	KA080174	A080352	200	170	nero/black	17	170	128	3865084	
KA080303	KA080175	A080353	230	200	grigio/gray	20	200	150	3865084	
KA080304	KA080176	A080354	255	225	verde/green	22,5	225	169	3865084	
KA080305	KA080177	A080355	280	250	blu/blue	25	250	188	3865084	3800250

CRONOLOGIA REVISIONI				
REV	DESCRIZIONE	DATA	PROG	
02	Modified BOM Valve (280-250 mbar calibration)	18/09/2020	P.D.	
01	New codes and part number of spring	10/12/2019	P.D.	
Progettato P.D.	Controllato A.A.	Cod. Componente see table	Data 29/06/2017	Materiale
		RELIEF VALVE RV70		Massa 0,124 kg
170629			Edizione 02	Foglio 1 / 2



ELENCO PARTI

ELEM.	QTÀ	NUMERO PARTE	Numero di magazzino	DESCRIZIONE
5	1	170629 03	A101310	CODOLO COMPLETO
5.1	1	170629 01	5201402	GHIERA
7	1	190629 09	5401037N	CORPO VALVOLA
8	1	190629 08	(SEE TABLE)	MOLLA
9	1	170629 06	3104042N	GUARNIZIONE
10	1	170629 04	5404060N	PIATTELLO VA70
11	1	170629 05	5800255N	ASTA PIATTELLO
12	1	170629 07	5404057N	DADO RV70
13	1	ISO 7050 - ST2,9 x 13 - C - Z	3972016	Vite autofilettante (Lamiera)
14	1	170629 10	5403072N	TAPPO
15	1	O-RING VA70	3104043N	
16	1	ORM42X2		
18	1	160929 18	5800250	DISTANZIALE 8.2x12x3

Progettato P.D.	Controllato A.A.	Cod. Componente see table	Data 29/06/2017	Materiale
 SCOPREGA		RELIEF VALVE RV70		Massa 0.124 kg
170629			Edizione 02	Foglio 2 / 2